



Fish and Wildlife Research Institute
 100 Eighth Avenue SE ; St. Petersburg, FL 33701
 tel: (727) 896-8626 fax: (727) 550-4222

HAB PHYTOPLANKTON REPORT

Sample Date: 2/4/2013	Collected By: Clark, Cheryl	Collecting Agency: EBAP	Analysis Date: 2/5/2013	FWRI Analyst: Henschen, K.	Sample Condition: Preserved
------------------------------	------------------------------------	--------------------------------	--------------------------------	-----------------------------------	------------------------------------

HAB ID Original ID	Location	County	Lat/Lon (DD.dddd)	Time (GMT)	Depth (m)	Temp (C)	Sal (ppt)	DO mg/L	pH	<i>Genus species</i>	cells/liter	Comments
HABW130205-011	Mantanzas Pass, Estero Bay	Lee	26.4577 -81.9532	12:20	.5	16.90	32.7	8.60	8.11			
										<i>Karenia brevis</i>	36,000	
										<i>Pyrodinium bahamense</i>	0	
HABW130205-014 EBV003	Estero River, mouth of, Estero Bay	Lee	26.4294 -81.8580	12:15	.5	15.90	33.8	8.00	8.38			
										<i>Karenia brevis</i>	667	
										<i>Pyrodinium bahamense</i>	0	
HABW130205-017	Pelican Bay Nature Park Pier, Estero Bay	Lee	26.3584 -81.8375	12:24	.8	15.70	33.4	8.50	7.91			
										<i>Karenia brevis</i>	667	
										<i>Pyrodinium bahamense</i>	0	
HABW130205-020 EBV006	Coon Key, 0.85 miles N of, Estero Bay	Lee	26.4287 -81.8832	12:39	1.4	15.70	33.4	8.40	7.91			
										<i>Pyrodinium bahamense</i>	0	
										<i>Karenia brevis</i>	0	
HABW130205-021 EBV007	Mound House dock, Estero Bay	Lee	26.4462 -81.9272	12:03	2.5	17.10	30.8	7.60	7.99			
										<i>Karenia brevis</i>	333	
										<i>Pyrodinium bahamense</i>	0	

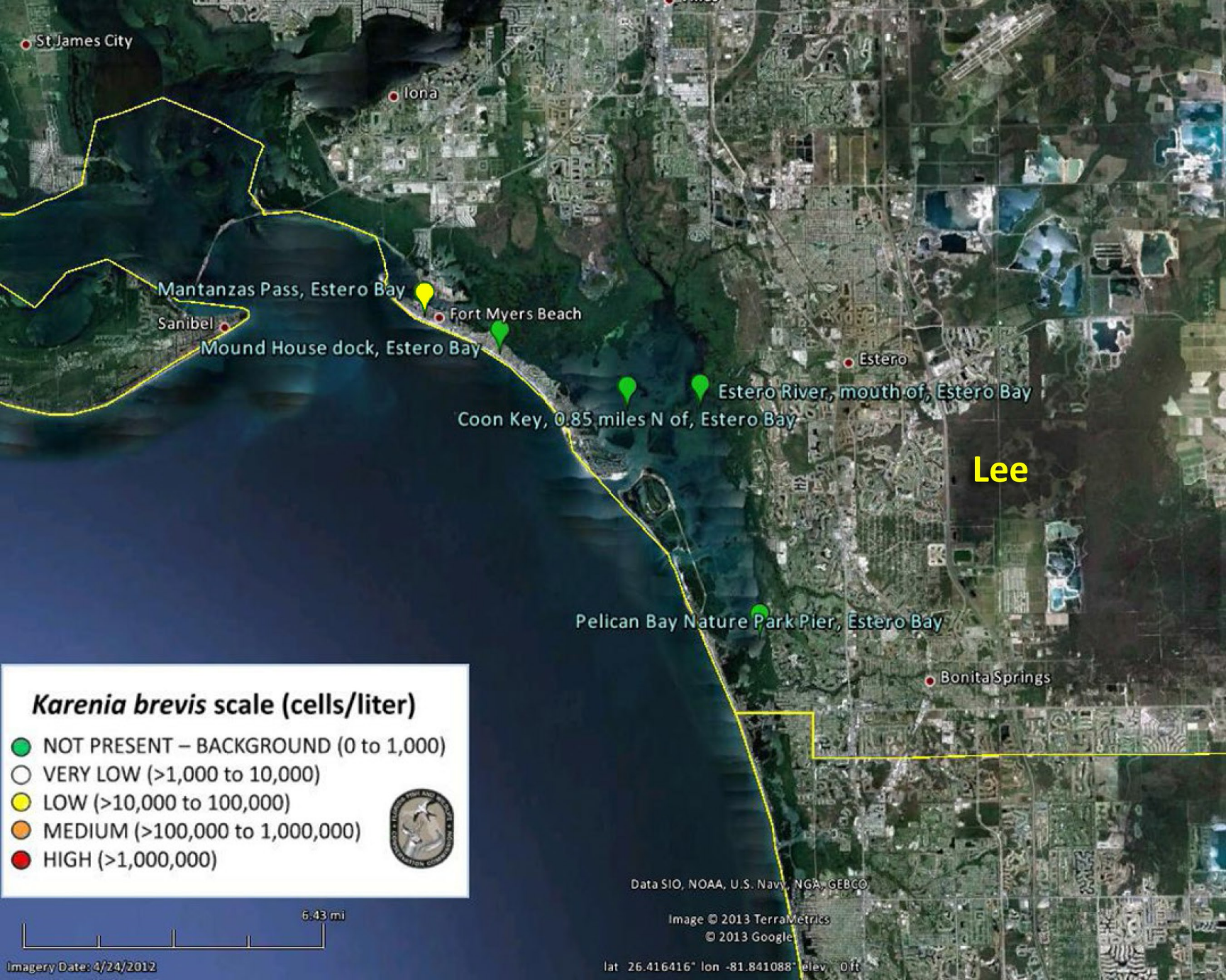
NOTE: Blank field = not measured.

Description	<i>Karenia brevis</i> cells/L	Possible Effects (<i>Karenia brevis</i> only)
NOT PRESENT - BACKGROUND	0 - 1,000	None anticipated
VERY LOW	> 1,000 - 10,000	Possible respiratory irritation; shellfish harvesting closures ≥ 5,000 cells/L
LOW	> 10,000 - 100,000	Respiratory irritation; possible fish kills and bloom chlorophyll probably detected by satellites at upper range
MEDIUM	> 100,000 - 1,000,000	Respiratory irritation and probable fish kills
HIGH	> 1,000,000	As above plus discoloration

The above report is distributed by the Harmful Algal Bloom (HAB) Group at the Fish and Wildlife Research Institute of the Florida Fish and Wildlife Conservation Commission. The report is intended to (1) provide timely information on HABs in Florida waters to partner agencies and (2) facilitate communication among individuals who direct response activities to address public health concerns. We report on the abundance of [Karenia brevis](#) and [Pyrodinium bahamense](#). *Karenia brevis*, the Florida red tide organism, produces neurotoxins called brevetoxins that can kill fish and other marine life. Brevetoxins may cause respiratory irritation in beachgoers and Neurotoxic Shellfish Poisoning in humans that consume contaminated shellfish. *Pyrodinium bahamense* produces saxitoxins that can cause Paralytic Shellfish Poisoning or Saxitoxin Puffer Fish Poisoning in humans if contaminated shellfish or puffer fish are consumed. For information on red tide related human health issues, please refer to the [Department of Health Aquatic Toxins Program](#).

[State-wide status reports](#) including interactive Google Maps are provided weekly by our group and [shellfish harvesting area status maps](#) are provided by the Division of Aquaculture. Gulf Coast beach conditions can be found at [Mote Marine Laboratory's Beach Conditions Report](#). A full list of red tide related hotlines and information sources can be found [here](#). Data for other species can be requested at any time by sending an inquiry to HABData@myFWC.com.

DISCLAIMER: While every practical step has been taken to provide accurate information in these reports, the need for rapid distribution precludes extensive review. Further, reports are generated with limited interpretation and do not necessarily reflect all scientific observations.



St James City

Iona

Mantanzas Pass, Estero Bay

Sanibel

Mound House dock, Estero Bay

Fort Myers Beach

Coon Key, 0.85 miles N of, Estero Bay

Estero River, mouth of, Estero Bay

Estero

Lee

Pelican Bay Nature Park Pier, Estero Bay

Bonita Springs

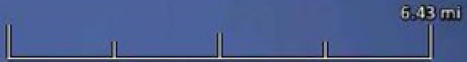
Karenia brevis scale (cells/liter)

- NOT PRESENT – BACKGROUND (0 to 1,000)
- VERY LOW (>1,000 to 10,000)
- LOW (>10,000 to 100,000)
- MEDIUM (>100,000 to 1,000,000)
- HIGH (>1,000,000)



Data SIO, NOAA, U.S. Navy, NGA, GEBCO

Image © 2013 TerraMetrics
© 2013 Google



Imagery Date: 4/24/2012

lat 26.416416° lon -81.841088° Elev. 0 ft