



**Fish and Wildlife Research Institute**  
 100 Eighth Avenue SE ; St. Petersburg, FL 33701  
 tel: (727) 896-8626 fax: (727) 550-4222

**HAB PHYTOPLANKTON REPORT**

<b>Sample Date:</b> 2/3/2014	<b>Collected By:</b> FDEP Staff	<b>Collecting Agency:</b> FDEP	<b>Analysis Date:</b> 2/4/2014	<b>FWRI Analyst:</b> Henschen, K.	<b>Sample Condition:</b> Preserved
------------------------------	---------------------------------	--------------------------------	--------------------------------	-----------------------------------	------------------------------------

HAB ID Original ID	Location	County	Lat/Lon (DD.dddd)	Time (GMT)	Depth (m)	Temp (C)	Sal (ppt)	DO mg/L	pH	<i>Genus species</i>	cells/liter	Comments
HABW140204-009 FDEP CHV007	Punta Gorda Boat Ramp	Charlotte	26.9092 -82.0953	12:20	2.0	19.20	28.4	5.70	7.84			
										<i>Pyrodinium bahamense</i>	0	
										<i>Karenia brevis</i>	0	
HABW140204-010 FDEP CHV009	Burnt Marina, Charlotte Harbor	Lee	26.7614 -82.0611	12:50	1.2	19.70	30.9	5.00	8.09			
										<i>Pyrodinium bahamense</i>	0	
										<i>Karenia brevis</i>	0	

NOTE: Blank field = not measured.



**Fish and Wildlife Research Institute**  
 100 Eighth Avenue SE ; St. Petersburg, FL 33701  
 tel: (727) 896-8626 fax: (727) 550-4222

**HAB PHYTOPLANKTON REPORT**

<b>Sample Date:</b> 2/3/2014	<b>Collected By:</b> Estero Bay Staff	<b>Collecting Agency:</b> EBAP	<b>Analysis Date:</b> 2/4/2014	<b>FWRI Analyst:</b> Henschen, K.	<b>Sample Condition:</b> Preserved
------------------------------	---------------------------------------	--------------------------------	--------------------------------	-----------------------------------	------------------------------------

HAB ID Original ID	Location	County	Lat/Lon (DD.dddd)	Time (GMT)	Depth (m)	Temp (C)	Sal (ppt)	DO mg/L	pH	<i>Genus species</i>	cells/liter	Comments
HABW140204-011 FDEP EBV001	Mantanzas Pass, Estero Bay	Lee	26.4577 -81.9532	12:35	3.8	19.90	33.8	7.60	8.45			
										<i>Pyrodinium bahamense</i>	0	
										<i>Karenia brevis</i>	0	
HABW140204-012 FDEP EBV003	Estero River, Mouth of, Estero Bay	Lee	26.4294 -81.8580	12:45	1.1	21.50	33.6	9.30	8.06			
										<i>Pyrodinium bahamense</i>	0	
										<i>Karenia brevis</i>	0	
HABW140204-013 FDEP LBV004	Redfish Cove, Estero Bay	Charlotte	26.9342 -82.3520	12:12	1.3	.	32.8	.	8.13			
										<i>Pyrodinium bahamense</i>	0	
										<i>Karenia brevis</i>	0	
HABW140204-014 FDEP EBV005	Pelican Bay Nature Park Pier, Estero Bay	Lee	26.3584 -81.8375	12:16	.7	21.10	34.1	6.90	7.75			
										<i>Pyrodinium bahamense</i>	0	
										<i>Karenia brevis</i>	0	
HABW140204-015 FDEP EBV007	Mound House dock, Estero Bay	Lee	26.4462 -81.9272	12:40	2.1	20.30	29.8	7.30	7.78			
										<i>Pyrodinium bahamense</i>	0	
										<i>Karenia brevis</i>	0	

NOTE: Blank field = not measured.

HAB ID Original ID	Location	County	Lat/Lon (DD.dddd)	Time (GMT)	Depth (m)	Temp (C)	Sal (ppt)	DO mg/L	pH	Genus species	cells/liter	Comments
HABW140204-016 FDEP EBERS 2	Estero River, upstream	Lee	26.4386 -81.8400	12:30	1.8	22.40	17.1	4.40	7.58			
										<i>Pyrodinium bahamense</i>	0	
										<i>Karenia brevis</i>	0	



**Fish and Wildlife Research Institute**  
 100 Eighth Avenue SE ; St. Petersburg, FL 33701  
 tel: (727) 896-8626 fax: (727) 550-4222

**HAB PHYTOPLANKTON REPORT**

<b>Sample Date:</b> 2/3/2014	<b>Collected By:</b> Allen, R.	<b>Collecting Agency:</b> CF	<b>Analysis Date:</b> 2/4/2014	<b>FWRI Analyst:</b> Brame, J.	<b>Sample Condition:</b> Preserved
------------------------------	--------------------------------	------------------------------	--------------------------------	--------------------------------	------------------------------------

HAB ID Original ID	Location	County	Lat/Lon (DD.dddd)	Time (GMT)	Depth (m)	Temp (C)	Sal (ppt)	DO	pH	<i>Genus species</i>	cells/liter	Comments
HABW140204-017	Boca Grande Pass	Lee	26.7180 -82.2525		.5	.	.	.	.			
										<i>Pyrodinium bahamense</i>	0	
										<i>Karenia brevis</i>	0	
HABW140204-018	Cayo Costa, 5.37 miles W of	Lee	26.6618 -82.3368		.5	.	.	.	.			
										<i>Pyrodinium bahamense</i>	0	
										<i>Karenia brevis</i>	0	
HABW140204-019	Cayo Costa, 12.12 miles W of	Lee	26.6257 -82.4272		.5	.	.	.	.			
										<i>Pyrodinium bahamense</i>	0	
										<i>Karenia brevis</i>	0	
HABW140204-020	Cayo Costa, 13.75 miles W of	Lee	26.6176 -82.4492		.5	.	.	.	.			
										<i>Pyrodinium bahamense</i>	0	
										<i>Karenia brevis</i>	0	

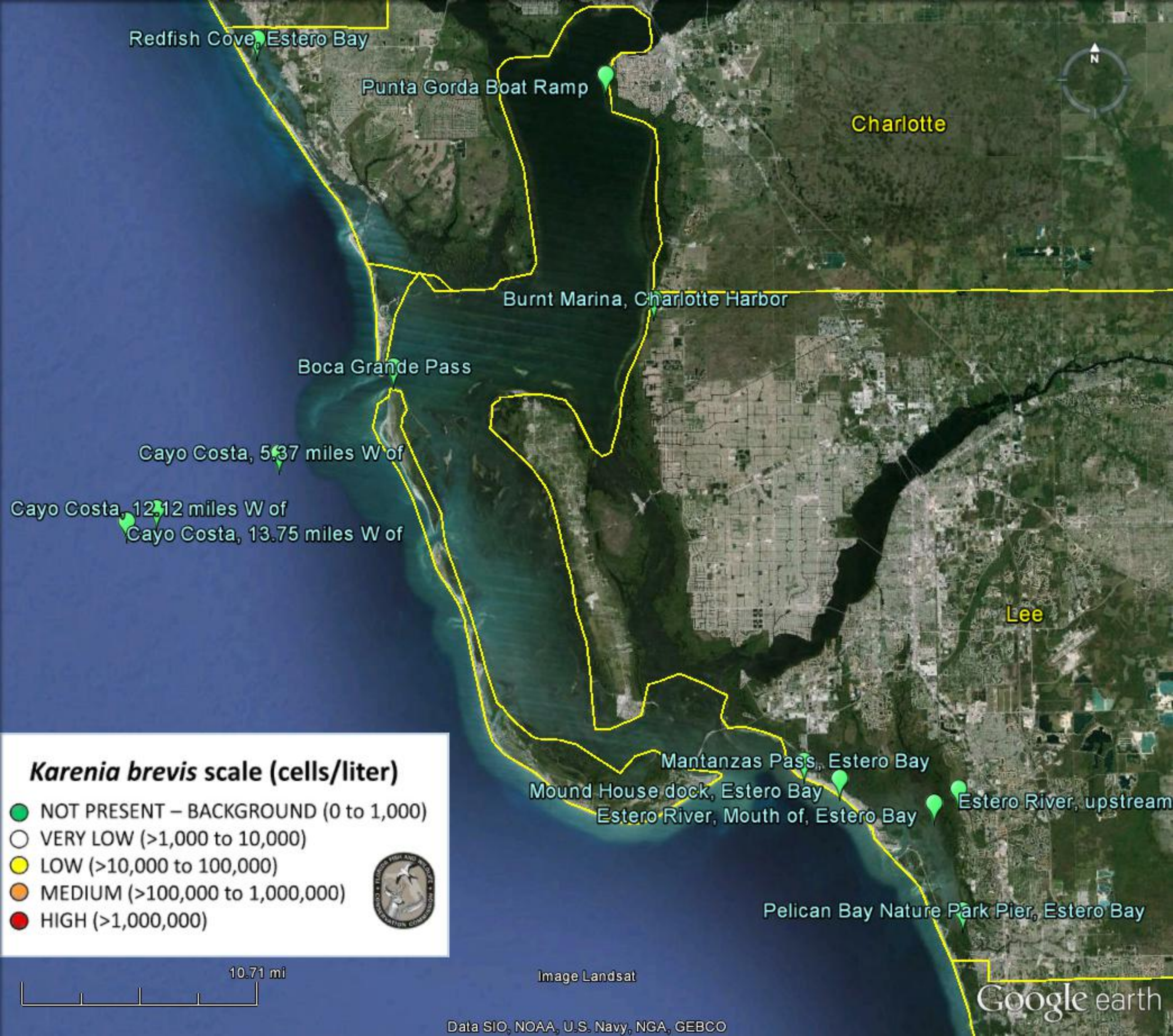
NOTE: Blank field = not measured.

Description	<i>Karenia brevis</i> cells/L	Possible Effects ( <i>Karenia brevis</i> only)
NOT PRESENT - BACKGROUND	0 - 1,000	None anticipated
VERY LOW	> 1,000 - 10,000	Possible respiratory irritation; shellfish harvesting closures ≥ 5,000 cells/L
LOW	> 10,000 - 100,000	Respiratory irritation; possible fish kills and bloom chlorophyll probably detected by satellites at upper range
MEDIUM	> 100,000 - 1,000,000	Respiratory irritation and probable fish kills
HIGH	> 1,000,000	As above plus discoloration

The above report is distributed by the Harmful Algal Bloom (HAB) Group at the Fish and Wildlife Research Institute of the Florida Fish and Wildlife Conservation Commission. The report is intended to (1) provide timely information on HABs in Florida waters to partner agencies and (2) facilitate communication among individuals who direct response activities to address public health concerns. We report on the abundance of [Karenia brevis](#) and [Pyrodinium bahamense](#). *Karenia brevis*, the Florida red tide organism, produces neurotoxins called brevetoxins that can kill fish and other marine life. Brevetoxins may cause respiratory irritation in beachgoers and Neurotoxic Shellfish Poisoning in humans that consume contaminated shellfish. *Pyrodinium bahamense* produces saxitoxins that can cause Paralytic Shellfish Poisoning or Saxitoxin Puffer Fish Poisoning in humans if contaminated shellfish or puffer fish are consumed. For information on red tide related human health issues, please refer to the [Department of Health Aquatic Toxins Program](#).

[State-wide status reports](#) including interactive Google Maps are provided weekly by our group and [shellfish harvesting area status maps](#) are provided by the Division of Aquaculture. Gulf Coast beach conditions can be found at [Mote Marine Laboratory's Beach Conditions Report](#). A full list of red tide related hotlines and information sources can be found [here](#). Data for other species can be requested at any time by sending an inquiry to [HABData@myFWC.com](mailto:HABData@myFWC.com). To learn more about HAB monitoring and research in Florida, please visit [Facebook.com/FLHABs](https://www.facebook.com/FLHABs).

DISCLAIMER: While every practical step has been taken to provide accurate information in these reports, the need for rapid distribution precludes extensive review. Further, reports are generated with limited interpretation and do



Redfish Cove, Estero Bay

Punta Gorda Boat Ramp

Charlotte

Burnt Marina, Charlotte Harbor

Boca Grande Pass

Cayo Costa, 5.37 miles W of

Cayo Costa, 12.12 miles W of

Cayo Costa, 13.75 miles W of

Lee

***Karenia brevis* scale (cells/liter)**

- NOT PRESENT – BACKGROUND (0 to 1,000)
- VERY LOW (>1,000 to 10,000)
- LOW (>10,000 to 100,000)
- MEDIUM (>100,000 to 1,000,000)
- HIGH (>1,000,000)



10.71 mi

Image Landsat

Data SIO, NOAA, U.S. Navy, NGA, GEBCO

Google earth

Mantanzas Pass, Estero Bay

Mound House dock, Estero Bay

Estero River, Mouth of, Estero Bay

Estero River, upstream

Pelican Bay Nature Park Pier, Estero Bay