



**Fish and Wildlife Research Institute**  
 100 Eighth Avenue SE ; St. Petersburg, FL 33701  
 tel: (727) 896-8626 fax: (727) 550-4222

**HAB PHYTOPLANKTON REPORT**

<b>Sample Date:</b> 6/2/2014	<b>Collected By:</b> Volunteers	<b>Collecting Agency:</b> FDEP	<b>Analysis Date:</b> 6/4/2014	<b>FWRI Analyst:</b> Henschen, K.	<b>Sample Condition:</b> Preserved
------------------------------	---------------------------------	--------------------------------	--------------------------------	-----------------------------------	------------------------------------

HAB ID Original ID	Location	County	Lat/Lon (DD.dddd)	Time (GMT)	Depth (m)	Temp (C)	Sal (ppt)	DO mg/L	pH	<i>Genus species</i>	cells/liter	Comments
HABW140603-016 FDEP EBV001	Mantanzas Pass; Estero Bav	Lee	26.4577 -81.9532	10:35	4.3	28.20	33.0	4.70	8.06			
										<i>Pyrodinium bahamense</i>	0	
										<i>Karenia brevis</i>	0	
HABW140603-017 FDEP EBV003	Estero River; mouth of; Estero Bay	Lee	26.4294 -81.8580	10:55	.6	27.20	36.3	8.00	5.30			
										<i>Karenia brevis</i>	0	
										<i>Pyrodinium bahamense</i>	0	
HABW140603-018 FDEP EBV005	Pelican Bay Nature Park Pier; Estero Bay	Lee	26.3584 -81.8375	10:38	.9	27.20	37.5	4.60	7.65			
										<i>Karenia brevis</i>	0	
										<i>Pyrodinium bahamense</i>	0	
HABW140603-019 FDEP EBV006	Coon Key; 0.85 miles N of; Estero Bay	Lee	26.4287 -81.8832	11:45	1.6	28.00	36.7	5.20	7.95			
										<i>Pyrodinium bahamense</i>	0	
										<i>Karenia brevis</i>	0	
HABW140603-020 FDEP EBV007	Mound House dock; Estero Bay	Lee	26.4462 -81.9272	11:12	2.6	28.40	32.2	5.60	8.22			
										<i>Pyrodinium bahamense</i>	0	
										<i>Karenia brevis</i>	0	

NOTE: Blank field = not measured.

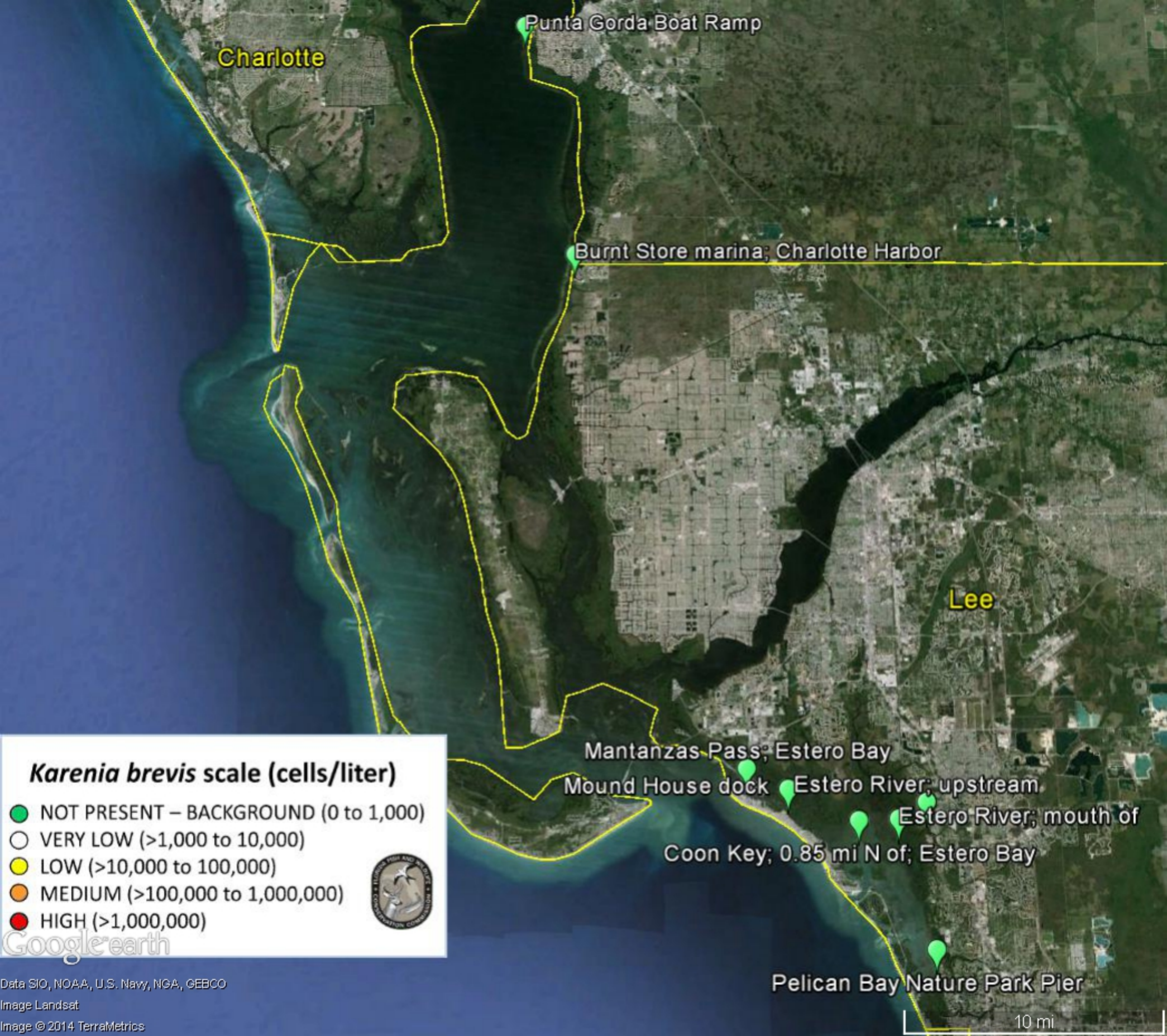
HAB ID Original ID	Location	County	Lat/Lon (DD.dddd)	Time (GMT)	Depth (m)	Temp (C)	Sal (ppt)	DO	pH	Genus species	cells/liter	Comments
HABW140603-021 FDEP EBERS 2	<b>Estero River; upstream</b>	Lee	26.4386 -81.8400	10:50	1.9	27.10	22.5	.	7.79			
										<i>Karenia brevis</i>	0	
										<i>Pyrodinium bahamense</i>	0	
HABW140603-022 FDEP CHV007	<b>Punta Gorda Boat Ramp</b>	Charlotte	26.9092 -82.0953	10:21	2.0	27.60	28.6	55.30	7.90			
										<i>Karenia brevis</i>	0	
										<i>Pyrodinium bahamense</i>	0	
HABW140603-023 FDEP CHV009	<b>Burnt Store Marina; Charlotte Harbor</b>	Lee	26.7614 -82.0611	10:55	1.2	27.70	32.3	3.00	7.90			
										<i>Pyrodinium bahamense</i>	0	
										<i>Karenia brevis</i>	0	

Description	<i>Karenia brevis</i> cells/L	Possible Effects ( <i>Karenia brevis</i> only)
NOT PRESENT - BACKGROUND	0 - 1,000	None anticipated
VERY LOW	> 1,000 - 10,000	Possible respiratory irritation; shellfish harvesting closures ≥ 5,000 cells/L
LOW	> 10,000 - 100,000	Respiratory irritation; possible fish kills and bloom chlorophyll probably detected by satellites at upper range
MEDIUM	> 100,000 - 1,000,000	Respiratory irritation and probable fish kills
HIGH	> 1,000,000	As above plus discoloration

The above report is distributed by the Harmful Algal Bloom (HAB) Group at the Fish and Wildlife Research Institute of the Florida Fish and Wildlife Conservation Commission. The report is intended to (1) provide timely information on HABs in Florida waters to partner agencies and (2) facilitate communication among individuals who direct response activities to address public health concerns. We report on the abundance of [Karenia brevis](#) and [Pyrodinium bahamense](#). *Karenia brevis*, the Florida red tide organism, produces neurotoxins called brevetoxins that can kill fish and other marine life. Brevetoxins may cause respiratory irritation in beachgoers and Neurotoxic Shellfish Poisoning in humans that consume contaminated shellfish. *Pyrodinium bahamense* produces saxitoxins that can cause Paralytic Shellfish Poisoning or Saxitoxin Puffer Fish Poisoning in humans if contaminated shellfish or puffer fish are consumed. For information on red tide related human health issues, please refer to the [Department of Health Aquatic Toxins Program](#).

[State-wide status reports](#) including interactive Google Maps are provided weekly by our group and [shellfish harvesting area status maps](#) are provided by the Division of Aquaculture. Gulf Coast beach conditions can be found at [Mote Marine Laboratory's Beach Conditions Report](#). A full list of red tide related hotlines and information sources can be found [here](#). Data for other species can be requested at any time by sending an inquiry to [HABData@myFWC.com](mailto:HABData@myFWC.com). To learn more about HAB monitoring and research in Florida, please visit [Facebook.com/FLHABs](https://www.facebook.com/FLHABs).

DISCLAIMER: While every practical step has been taken to provide accurate information in these reports, the need for rapid distribution precludes extensive review. Further, reports are generated with limited interpretation and do



Charlotte

Punta Gorda Boat Ramp

Burnt Store marina; Charlotte Harbor

Lee

Mantanzas Pass; Estero Bay

Mound House dock

Estero River; upstream

Estero River; mouth of

Coon Key; 0.85 mi N of; Estero Bay

Pelican Bay Nature Park Pier

10 mi

### *Karenia brevis* scale (cells/liter)

- NOT PRESENT – BACKGROUND (0 to 1,000)
- VERY LOW (>1,000 to 10,000)
- LOW (>10,000 to 100,000)
- MEDIUM (>100,000 to 1,000,000)
- HIGH (>1,000,000)



Google earth

Data SIO, NOAA, U.S. Navy, NGA, GEBCO

Image Landsat

Image © 2014 TerraMetrics