



**Florida Fish and Wildlife Conservation
Commission
Fish and Wildlife Research Institute
100 Eighth Avenue SE
St. Petersburg, FL 33701-5020**

Tel: (727) 896-8626
Fax: (727) 550-4222

HAB PHYTOPLANKTON REPORT

From: 7/7/2014 To: 7/7/2014

Collected		Collecting	Analysis				FWRI			Sample		
By: Volunteer		Agency: EBAP	Date: 7/9/2014				Analyst: Henschen, K.			Condition: Preserved		
HAB ID	Location	County	Lat/Lon (DD.dddd)	Time (GMT)	Depth (m)	Temp (C)	Sal (ppt)	DO (mg/L)	pH	Genus species	cells/liter	Comments
Original ID	Sample Date											
HABW140709-019	Mantanzas Pass (Estero Bay)	Lee	26.4577 -81.9532	07:10:00	5.2	29.70	32.100	5.600	8.290			
	7/7/2014									<i>Karenia brevis</i>	0	
										<i>Pyrodinium bahamense</i>	0	
HABW140709-020	Carl Johnson Park Boat Ramp (Estero Bay)	Lee	26.3936 -81.8655	06:39:00	0.7	29.90	29.000	5.600	8.200			
	7/7/2014									<i>Karenia brevis</i>	0	
										<i>Pyrodinium bahamense</i>	0	
HABW140709-021	Pelican Bay Nature Park Pier (Estero Bay)	Lee	26.3584 -81.8375	06:45:00	1.9	29.10	33.500	6.400	8.400			
	7/7/2014									<i>Karenia brevis</i>	0	
										<i>Pyrodinium bahamense</i>	0	
HABW140709-022	Mound House Dock (Estero Bay)	Lee	26.4462 -81.9272	07:00:00	1.1	30.10	32.900	5.500	7.820			
	7/7/2014									<i>Karenia brevis</i>	0	
										<i>Pyrodinium bahamense</i>	0	
HABW140709-023	Estero River; upstream	Lee	26.4386 -81.8400	07:03:00	2.8	29.20	30.400	5.200	8.400			
	7/7/2014									<i>Karenia brevis</i>	0	
										<i>Pyrodinium bahamense</i>	0	

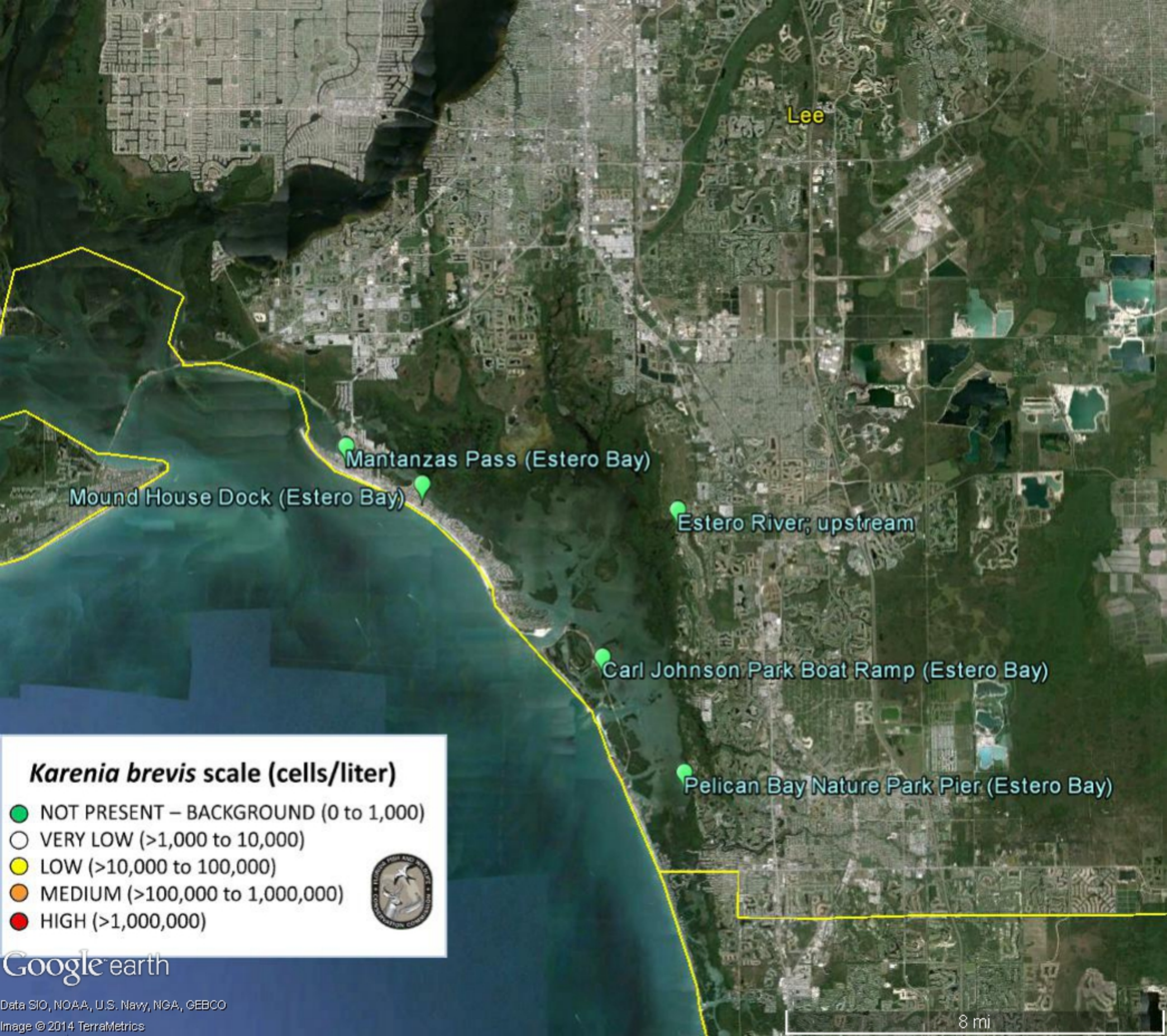
NOTE: Blank field = not measured

Description	<i>Karenia brevis</i> cells/L	Possible Effects (<i>Karenia brevis</i> only)
NOT PRESENT - BACKGROUND	0 - 1,000	None anticipated
VERY LOW	> 1,000 - 10,000	Possible respiratory irritation; shellfish harvesting closures ≥ 5,000 cells/L
LOW	> 10,000 - 100,000	Respiratory irritation; possible fish kills and bloom chlorophyll probably detected by satellites at upper range
MEDIUM	> 100,000 - 1,000,000	Respiratory irritation and probable fish kills
HIGH	> 1,000,000	As above plus discoloration

The above report is distributed by the Harmful Algal Bloom (HAB) Group at the Fish and Wildlife Research Institute of the Florida Fish and Wildlife Conservation Commission. The report is intended to (1) provide timely information on HABs in Florida waters to partner agencies and (2) facilitate communication among individuals who direct response activities to address public health concerns. We report on the abundance of [Karenia brevis](#) and [Pyrodinium bahamense](#). *Karenia brevis*, the Florida red tide organism, produces neurotoxins called brevetoxins that can kill fish and other marine life. Brevetoxins may cause respiratory irritation in beachgoers and Neurotoxic Shellfish Poisoning in humans that consume contaminated shellfish. *Pyrodinium bahamense* produces saxitoxins that can cause Paralytic Shellfish Poisoning or Saxitoxin Puffer Fish Poisoning in humans if contaminated shellfish or puffer fish are consumed. For information on red tide related human health issues, please refer to the [Department of Health Aquatic Toxins Program](#).

[State-wide status reports](#) including interactive Google Maps are provided weekly by our group and [shellfish harvesting area status maps](#) are provided by the Division of Aquaculture. Gulf Coast beach conditions can be found at [Mote Marine Laboratory's Beach Conditions Report](#). A full list of red tide related hotlines and information sources can be found [here](#). Data for other species can be requested at any time by sending an inquiry to HABData@myFWC.com. To learn more about HAB monitoring and research in Florida, please visit [Facebook.com/FLHABs](https://www.facebook.com/FLHABs).

DISCLAIMER: While every practical step has been taken to provide accurate information in these reports, the need for rapid distribution precludes extensive review. Further, reports are generated with limited interpretation and do



Lee

Mantanzas Pass (Estero Bay)

Mound House Dock (Estero Bay)

Estero River, upstream

Carl Johnson Park Boat Ramp (Estero Bay)

Pelican Bay Nature Park Pier (Estero Bay)

***Karenia brevis* scale (cells/liter)**

- NOT PRESENT – BACKGROUND (0 to 1,000)
- VERY LOW (>1,000 to 10,000)
- LOW (>10,000 to 100,000)
- MEDIUM (>100,000 to 1,000,000)
- HIGH (>1,000,000)



Google earth

Data SIO, NOAA, U.S. Navy, NGA, GEBCO

Image © 2014 TerraMetrics

8 mi