



Fish and Wildlife Research Institute
 100 Eighth Avenue SE ; St. Petersburg, FL 33701
 tel: (727) 896-8626 fax: (727) 550-4222

HAB PHYTOPLANKTON REPORT

Sample Date: 1/5/2015	Collected By: Volunteer	Collecting Agency: FDEP/EBAP	Analysis Date: 01/06/2015	FWRI Analyst: Markley, L.	Sample Condition: Preserved
------------------------------	--------------------------------	-------------------------------------	----------------------------------	----------------------------------	------------------------------------

HAB ID Original ID	Location	County	Lat/Lon (DD.dddd)	Time (GMT)	Depth (m)	Temp (C)	Sal (ppt)	DO mg/L	pH	<i>Genus species</i>	cells/liter	Comments
HABW150106-009 FDEP CHV007	Punta Gorda Boat Ramp (Charlotte)	Charlotte	26.9092 -82.0953	12:05	.5	23.30	26.2	4.70	7.27			
										<i>Karenia brevis</i>	0	
										<i>Pyrodinium bahamense</i>	0	
HABW150106-010 FDEP CHV009	Burnt Store Marina (Charlotte Harbor)	Lee	26.7614 -82.0611	12:03	.5	22.60	30.6	5.60	7.51			
										<i>Karenia brevis</i>	0	
										<i>Pyrodinium bahamense</i>	0	
HABW150106-011 FDEP EBERS2	Estero River; upstream	Lee	26.4386 -81.8400	12:00	.5	23.30	21.6	3.70	7.32			
										<i>Pyrodinium bahamense</i>	0	
										<i>Karenia brevis</i>	0	
HABW150106-012 FDEP EBV001	Matanzas Pass (Estero Bay)	Lee	26.4577 -81.9532	12:25	.5	24.10	32.5	6.10	7.90			
										<i>Pyrodinium bahamense</i>	0	
										<i>Karenia brevis</i>	0	
HABW150106-013 FDEP EBV003	Estero River; mouth of (Estero Bay)	Lee	26.4294 -81.8580	12:25	.5	24.00	28.3	4.40	7.33			
										<i>Pyrodinium bahamense</i>	0	
										<i>Karenia brevis</i>	0	

NOTE: Blank field = not measured.

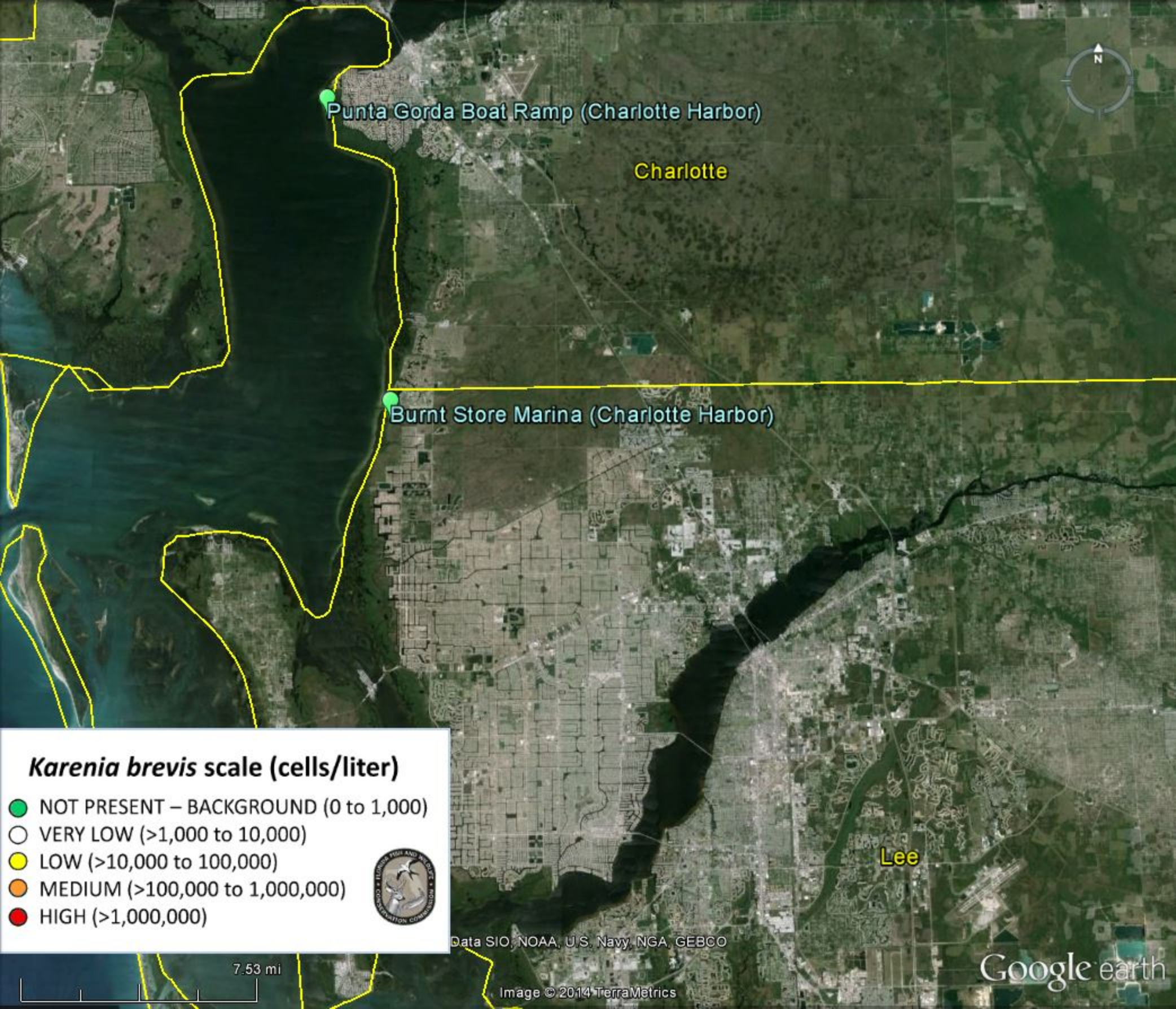
HAB ID Original ID	Location	County	Lat/Lon (DD.dddd)	Time (GMT)	Depth (m)	Temp (C)	Sal (ppt)	DO	pH	Genus species	cells/liter	Comments
HABW150106-014 FDEP EBV004	Carl Johnson Park Boat Ramp (Estero Bay)	Lee	26.3936 -81.8655	12:17	.5	23.20	33.4	.	8.03			
										<i>Karenia brevis</i>	0	
										<i>Pyrodinium bahamense</i>	0	
HABW150106-015 FDEP EBV005	Pelican Bay Nature Park Pier (Estero Bay)	Lee	26.3584 -81.8375	12:16	.5	24.00	33.2	3.50	7.54			
										<i>Karenia brevis</i>	0	
										<i>Pyrodinium bahamense</i>	0	
HABW150106-016 FDEP EBV006	Coon Key; N of (Estero Bay)	Lee	26.4287 -81.8832	11:50	.5	23.60	32.2	6.90	8.11			
										<i>Karenia brevis</i>	0	
										<i>Pyrodinium bahamense</i>	0	
HABW150106-017 FDEP EBV007	Mound House Dock (Estero Bay)	Lee	26.4462 -81.9272	10:53	.5	23.90	31.4	5.90	7.84			
										<i>Pyrodinium bahamense</i>	0	
										<i>Karenia brevis</i>	0	

Description	<i>Karenia brevis</i> cells/L	Possible Effects (<i>Karenia brevis</i> only)
NOT PRESENT - BACKGROUND	0 - 1,000	None anticipated
VERY LOW	> 1,000 - 10,000	Possible respiratory irritation; shellfish harvesting closures \geq 5,000 cells/L
LOW	> 10,000 - 100,000	Respiratory irritation; possible fish kills and bloom chlorophyll probably detected by satellites at upper range
MEDIUM	> 100,000 - 1,000,000	Respiratory irritation and probable fish kills
HIGH	> 1,000,000	As above plus discoloration

The above report is distributed by the Harmful Algal Bloom (HAB) Group at the Fish and Wildlife Research Institute of the Florida Fish and Wildlife Conservation Commission. The report is intended to (1) provide timely information on HABs in Florida waters to partner agencies and (2) facilitate communication among individuals who direct response activities to address public health concerns. We report on the abundance of [Karenia brevis](#) and [Pyrodinium bahamense](#). *Karenia brevis*, the Florida red tide organism, produces neurotoxins called brevetoxins that can kill fish and other marine life. Brevetoxins may cause respiratory irritation in beachgoers and Neurotoxic Shellfish Poisoning in humans that consume contaminated shellfish. *Pyrodinium bahamense* produces saxitoxins that can cause Paralytic Shellfish Poisoning or Saxitoxin Puffer Fish Poisoning in humans if contaminated shellfish or puffer fish are consumed. For information on red tide related human health issues, please refer to the [Department of Health Aquatic Toxins Program](#).

[State-wide status reports](#) including interactive Google Maps are provided weekly by our group and [shellfish harvesting area status maps](#) are provided by the Division of Aquaculture. Gulf Coast beach conditions can be found at [Mote Marine Laboratory's Beach Conditions Report](#). A full list of red tide related hotlines and information sources can be found [here](#). Data for other species can be requested at any time by sending an inquiry to HABData@myFWC.com. To learn more about HAB monitoring and research in Florida, please visit [Facebook.com/FLHABs](https://www.facebook.com/FLHABs).

DISCLAIMER: While every practical step has been taken to provide accurate information in these reports, the need for rapid distribution precludes extensive review. Further, reports are generated with limited interpretation and do not necessarily reflect all scientific observations.



Punta Gorda Boat Ramp (Charlotte Harbor)

Charlotte

Burnt Store Marina (Charlotte Harbor)

Lee

***Karenia brevis* scale (cells/liter)**

- NOT PRESENT – BACKGROUND (0 to 1,000)
- VERY LOW (>1,000 to 10,000)
- LOW (>10,000 to 100,000)
- MEDIUM (>100,000 to 1,000,000)
- HIGH (>1,000,000)

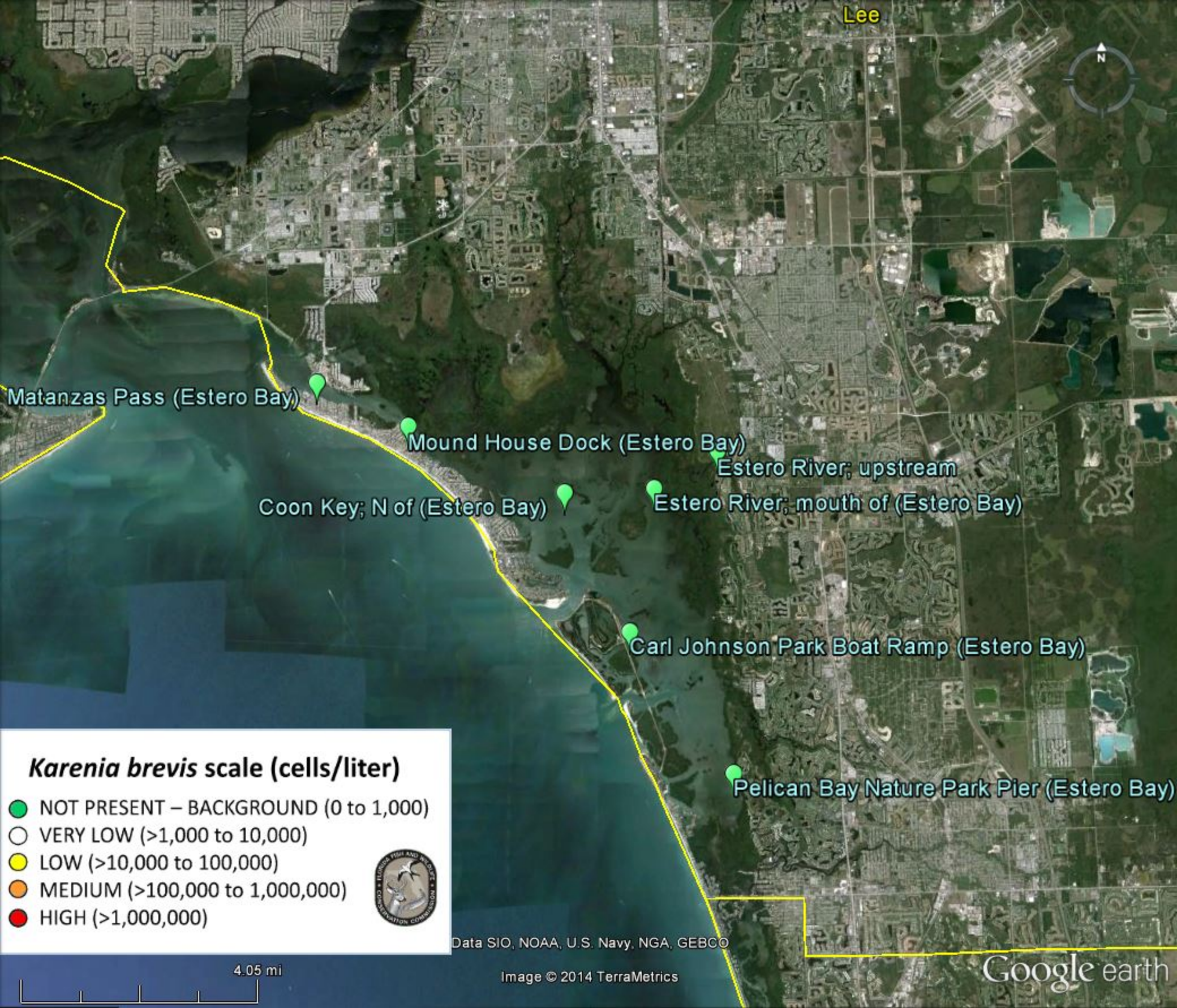


Data SIO, NOAA, U.S. Navy, NGA, GEBCO

7.53 mi

Image © 2014 TerraMetrics

Google earth



Lee



Matanzas Pass (Estero Bay)

Mound House Dock (Estero Bay)

Coon Key; N of (Estero Bay)

Estero River; upstream

Estero River; mouth of (Estero Bay)

Carl Johnson Park Boat Ramp (Estero Bay)

Pelican Bay Nature Park Pier (Estero Bay)

Karenia brevis scale (cells/liter)

- NOT PRESENT – BACKGROUND (0 to 1,000)
- VERY LOW (>1,000 to 10,000)
- LOW (>10,000 to 100,000)
- MEDIUM (>100,000 to 1,000,000)
- HIGH (>1,000,000)



Data SIO, NOAA, U.S. Navy, NGA, GEBCO

4.05 mi

Image © 2014 TerraMetrics

Google earth